

Tablelle dimensioni table of dimensions

65 CAVO	Motore	Argano	Argano rinviato 45°/90°
	motor	crank motor	extended joint at 45/90°
	mm	mm	mm
BL MINIMA	600	500*	600
BL MASSIMA	3500	3500	3500
HT MINIMA	600	600	600
HT MASSIMA	3000	3000	3000
SUP.MASSIMA	9 MQ	9 MQ	9 MQ
N MINIMA	105	125	105



Sezione orizzontale guida a cavo Horizontal section with cable guides

* Manovra obbligatoria a sinistra vista interna.

* Operations must be located in the left inside position.

NB: per dimensioni fuori tabella richiedere specifiche e fattibilità
NB: send a request for info and feasibility of further dimensions

65 STD	Motore	Argano	Argano rinviato 45°/90°
	Engeen	Argano	Argano rinviato 45°/90°
	mm	mm	mm
BL MINIMA	550	450*	450
BL MASSIMA	4500	4500	4500
HT MINIMA	600	600	600
HT MASSIMA	4800	4800	4800
SUP.MASSIMA	12,5 MQ	12,5 MQ	12,5 MQ
N MINIMA	105	125	105

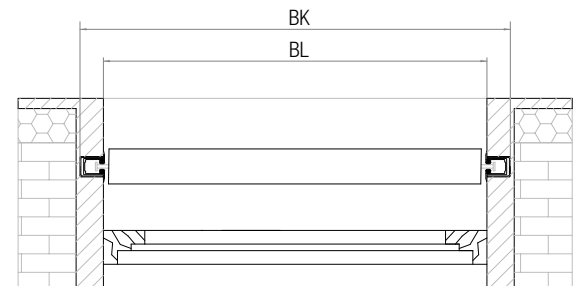
* Manovra obbligatoria a sinistra vista interna.

* Operations must be located in the left inside position.

NB: per dimensioni fuori tabella richiedere specifiche e fattibilità
NB: send a request for info and feasibility of further dimensions

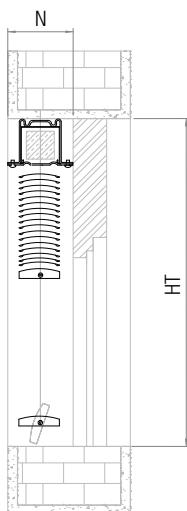


Sezione orizzontale guide in luce Horizontal section with standard rail guides

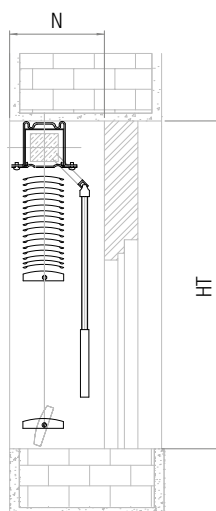


Sezione orizzontale guide incassate Horizontal section with embedded rail guides

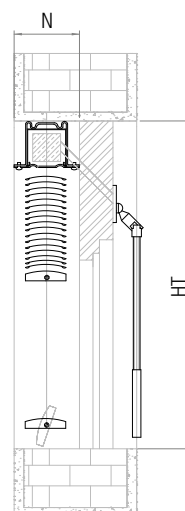
Sezione verticale - Vertical section



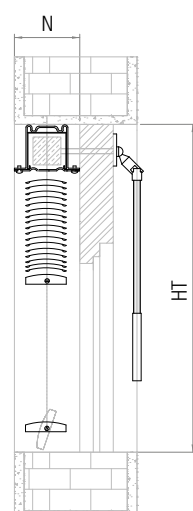
Motore
Motor operated



Argano diretto - Crank motor
with direct joint for handle



Argano rinviato a 45° - Crank motor
with extended joint for handle of 45°



Argano rinviato a 90° - Crank motor
with extended joint for handle of 90°